

**In-house IT**

**CSPi Vital™  
Managed IT  
Services**

VS.

**In-house IT**

**Vital™ Managed  
IT Services**



**2 people**  
(More or Less)



**Full IT**  
department  
staffed with  
**certified system  
engineers**



**\$6-\$10K**  
a month



**\$5K**  
a month



**8 hours/day,  
5 days/week**  
(Less vacations,  
illness, personal  
time-off)



**24 hours/  
7 days/  
week/ 365**



Reactive  
**Will “get to it  
as soon as  
we can”**



**Proactive 95%**  
of the time  
**BEFORE** problems  
have impacted  
production  
systems



**No guarantee**  
problem(s) will  
get fixed in a  
timely manner



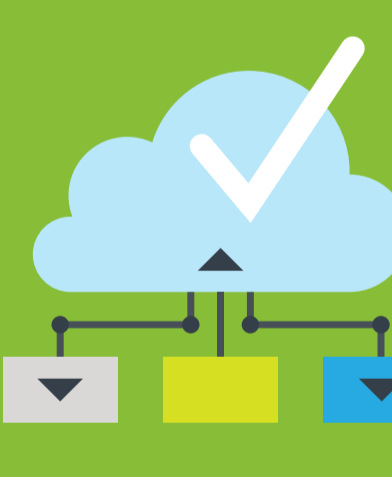
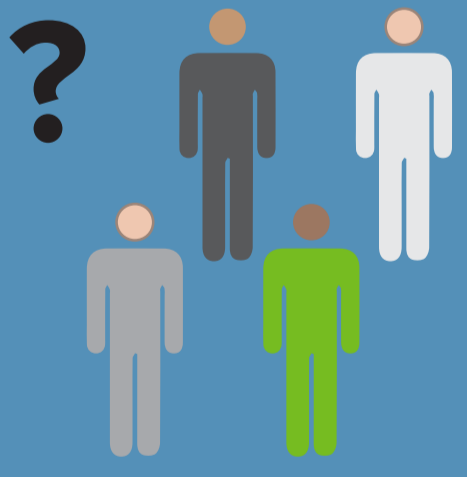
**Guaranteed  
fix**



**Doesn't have  
broad product  
experience,**  
requires  
someone else,  
need to hire  
**additional  
resources, too  
expensive**



**Expertise across  
Networking,  
Wireless &  
Mobility, Data  
Center,  
Collaboration,  
and Security**



IT needs such  
as updates &  
upgrades get  
put on hold



**IT infrastructure  
is continuously  
monitored,  
managed and  
maintained**

**Using  
CSPi Vital  
Managed IT  
Services**

You get 24/7/365 proactive monitoring, managing and maintenance of your infrastructure. Guaranteed support backed by SLA's. Reduction in operational and capital expenses. More time to focus on your core business. Access to more IT resources for a predictable flat fee.